



## Chatsworth Road, NW2

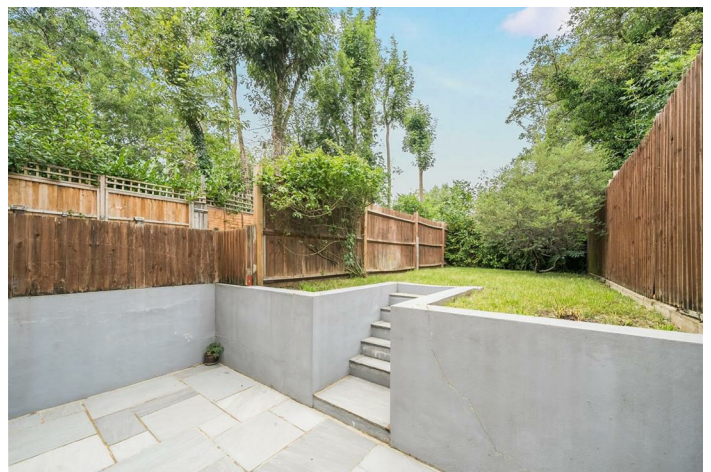
### Share of Freehold - £685,000

For Sale is this bright and airy two double bedroom maisonette providing 980 sq ft of internal living accommodation with its own private entrance and situated on a quiet tree-lined street.

The Ground Floor features a spacious reception room and a modern kitchen that seamlessly opens to the private 44 ft rear garden creating an ideal space for entertaining guests. The First Floor comprises two generously sized double bedrooms, each boasting its own en-suite bath/shower room, ensuring privacy and comfort.

Located on the Kilburn end of Chatsworth Road, this home is ideally situated just a short walk from Kilburn (Jubilee - Zone 2) and Brondesbury (Overground - Zone 2) Stations, making commuting a breeze. The vibrant local area offers an array of shops, restaurants, bars, and delis along Kilburn High Road, while the nearby neighbourhoods of West Hampstead and Queens Park provide additional social and recreational amenities.

- Offered CHAIN FREE - 2 bedroom maisonette
- Offering 980 sq ft of accommodation
- Private entrance
- En-suite bath/shower rooms
- COUNCIL: Brent (E)
- Viewing is highly recommended



020 8459 1133

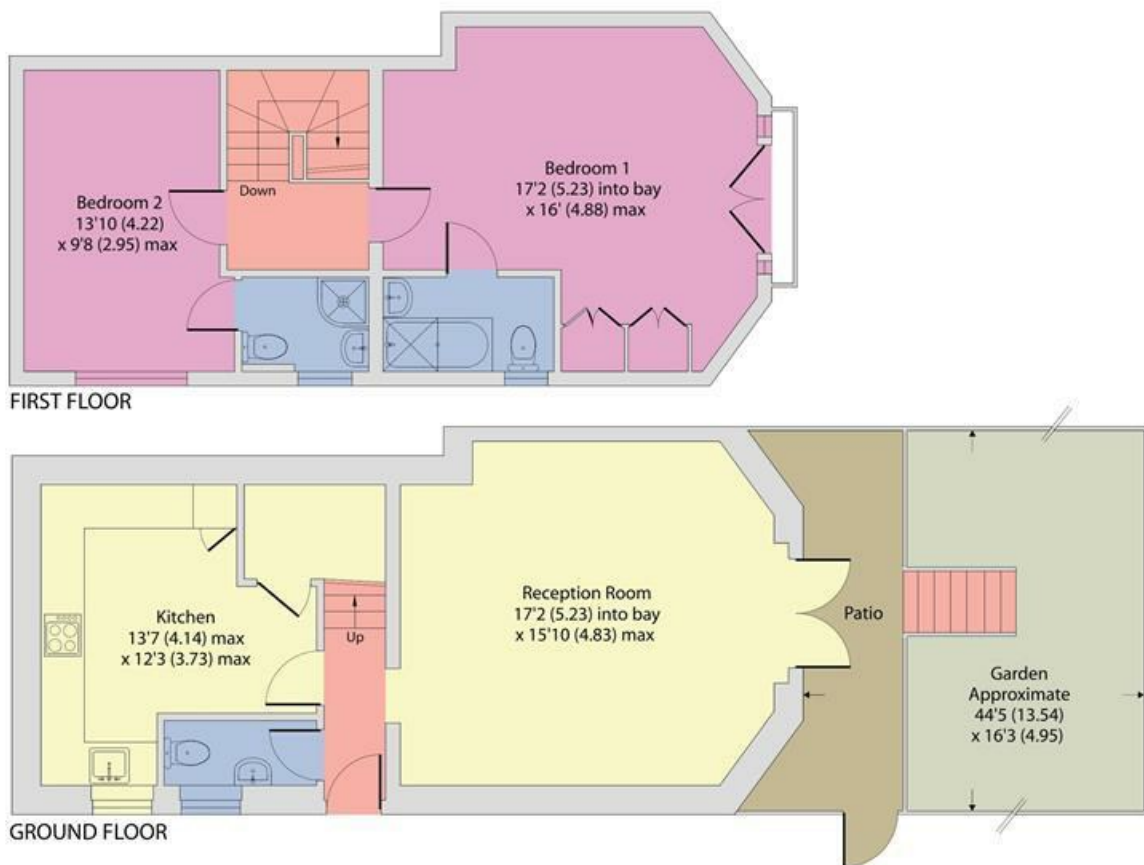
[enquiries@cameronsstiff.co.uk](mailto:enquiries@cameronsstiff.co.uk)

[cameronsstiff.co.uk](http://cameronsstiff.co.uk)

Chatsworth Road, London, NW2

Approximate Area = 980 sq ft / 91 sq m

For identification only - Not to scale



Floor plan produced in accordance with RICS Property Measurement Standards incorporating International Property Measurement Standards (IPMS2 Residential). © nichecom 2024. Produced for Camerons Stiff & Co. REF: 1183718

**EPC: C**  
Ref: 18992370

